



"Dedicated to Millie"

www.turnyourlifearound.com.au

It stares us in the face, with unwavering truth. It is our deeper connection with each other that is SO important in this lifetime.

When our gorgeous little Millie died a couple of weeks ago, the **grief** ran deeply – the **pain** reflected in each member of our family's eyes and energy. Our hearts were heavy as we tried to make sense - alive, then in a **flash**, gone.

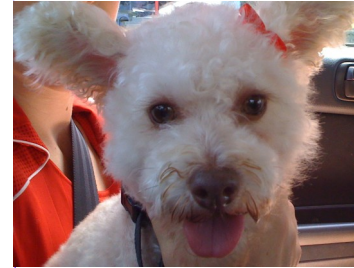
Millie had given us so much fun. We would find her toys scattered around in the most obscure places. She would race like a greyhound to the front door with bursting curiosity to greet our visitors. At the park she would chase every other dog in sight – she was the most sociable girl in town!

Joyfully, she would jump up and **nestle** in beside us or in our laps, giving always to us her **warmth** and unconditional love.

Six precious years of unconditional love was her **gift** to us. We were the **lucky** family she chose to share her life with. We are blessed to have had her as part of our family.

Time will heal, and the **memories** will remain in our **hearts** forever.

And as always, there is a **lesson** to learn. And as I see it, it is to follow Millie's example and offer that same **unconditional love** to all those we cherish. That's really what's MOST important, while they are still here with us, in **this** lifetime.



Millie
10/10/04–3/5/10
R.I.P.

Attend a Heal Your Life
Workshop/Study Group

Or a Private Focus Session
(all about you!)

These workshops are based on the philosophies of Louise L. Hay, metaphysical teacher & international best seller.

Services:

- Life Coaching
- NLP
- Heal Your Life Workshops & Study Groups

Try these daily affirmations:

"I chose the perfect family for this lifetime"

"All living beings are part of my family"